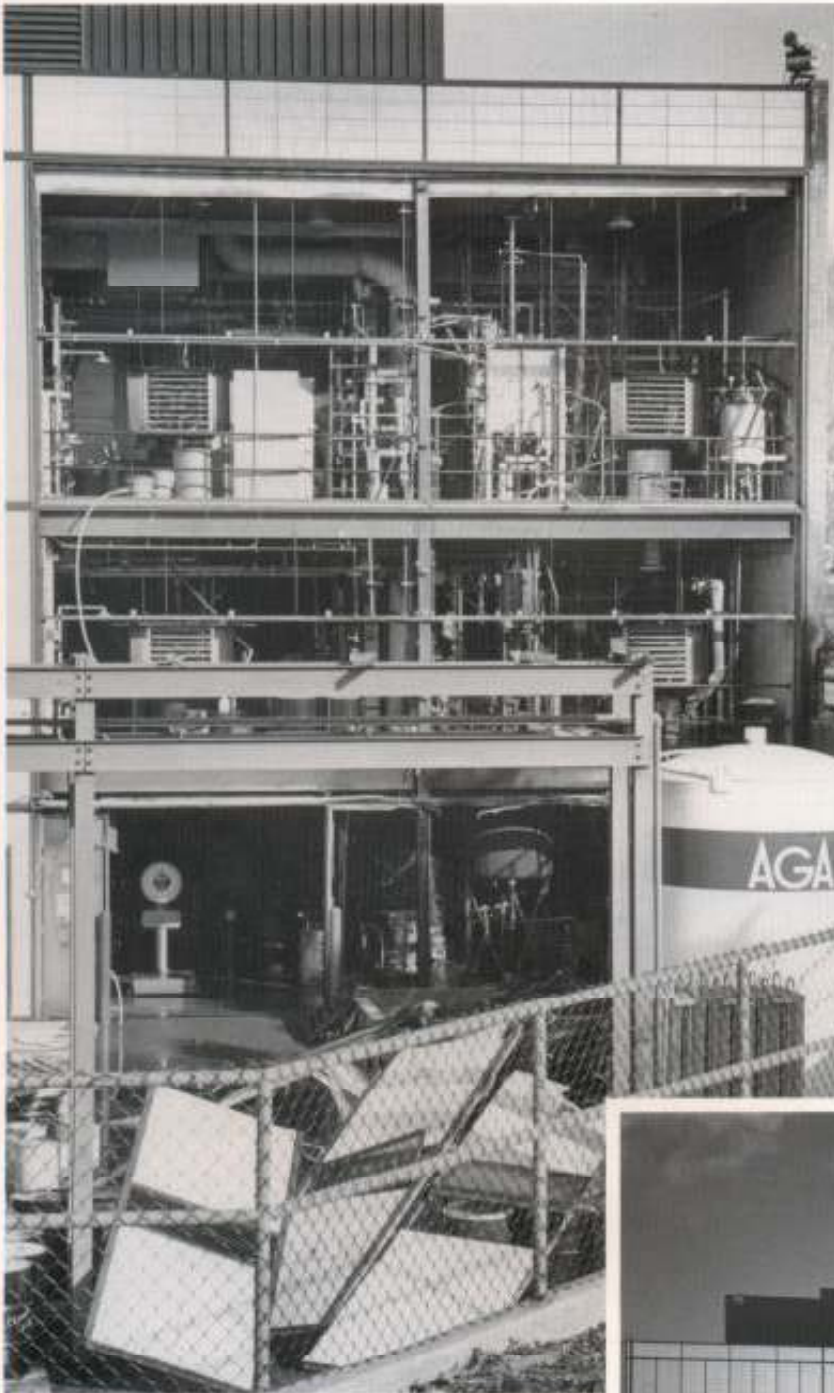


**Ohio chemical plant blew out – not up!
Kalwall's Blow-out Wall System "worked as planned".**



Photograph from THE PLAIN DEALER, Cleveland, Ohio.

"A fire and explosion at the Ricerca, Inc., Concord Township (near Cleveland), Ohio, plant blew out part of the building, injured four employees and forced evacuation of 50."

Once an explosion starts, there is virtually no way it can be stopped. (Except by highly specialized micro-second-fast fire hazard systems such as those developed by the Grinnell Corporation for solid rocket fuel manufacturers.) So, the theory is to let the explosive forces escape – easily – into the atmosphere. That way, the forces will not take any part (or all) of the building with them when they go!

The Kalwall Blow-out Wall is designed to release from the mounting system when the pressure reaches a predetermined point. Replacing the Panels is easy and economical, and *much* faster than rebuilding the plant!

Fire Chief John Preuer told reporters that "the wall was designed so the wall would blow out in the event of an explosion. The wall did exactly as it was designed to do."

(The four employees were treated for minor burns, abrasions, and "ringing ears")

Kalwall Specifications: White Faces
.24U Factor
Black Corrosion
Resistant Finish

Skidmore, Owings and Merrill, Architects

Ricerca, Inc. "before"

